



SUBURBAN HOSPITAL

JOHNS HOPKINS MEDICINE

Memo

To: Medevac Services – MSP Aviation
MedSTAR
U.S. Park Police Aviation
Andrews Air Force Base – Helicopter One
Stat Medevac

From: Melissa E. Meyers, RN, BSN, MBA, TCRN – Trauma Program Director

Date: 11/6/2017

Re: **ATTENTION: FYI** - Suburban Hospital Construction Cranes

Effective Monday, November 27, 2017 through Friday, December 1, 2017

This is notification of new crane locations for the Suburban Hospital campus construction effective Monday, November 27, 2017 through December 1, 2017. This should not impact helicopter landings. **The helipad will remain operational 24/7.**

There will be one large crane with the top of the stick being 140' in the air. The stick will be short and very limited in use, **it will not remain up the whole time.** The crane will not be swinging towards the helipad but it will extend over the parking garage. The crane operator will be equipped with a Hospital radio for notification of incoming helicopters. We have notified the crane operator that when a helicopter is approaching we are to come to a complete stop and if time permits lower the boom. This operation is scheduled to be a one-week duration starting on Monday, November 27 and be finished by Friday December 1

Please see the attached diagram for details.

Should you have any questions, please do not hesitate to contact me via e-mail at mmeyer23@jhmi.edu or via phone 301-896-3051.

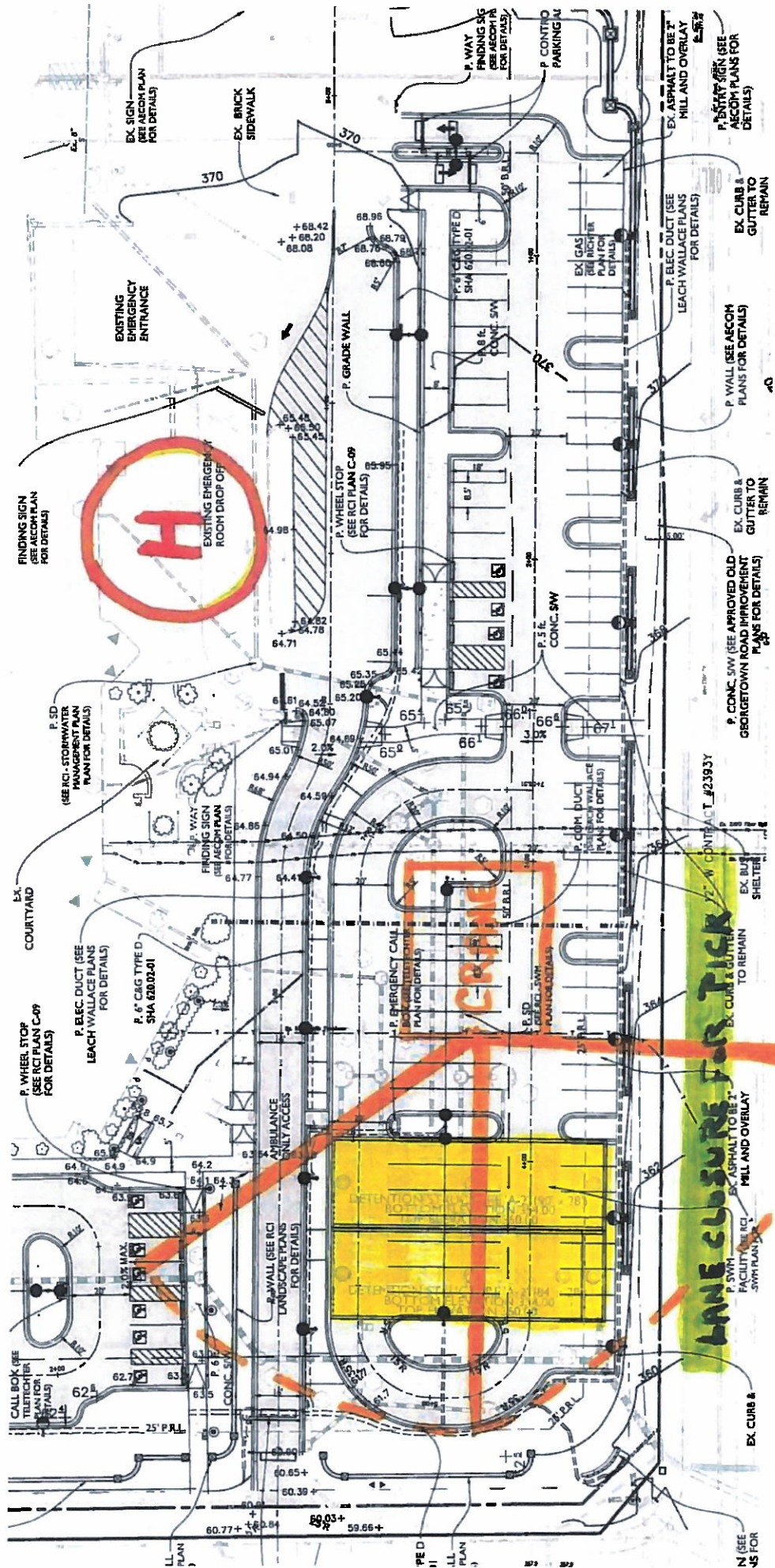
Thank you for your cooperation.

CON SPAN 60' X 90'

CRANE SET UP & SWING

OLD GEORGETOWN RD. LANE CLOSURE FOR DELIVERY OF CONSPAN
(CRANE WILL PICK UP TRACTOR TRAILER)

HELIPAD



LANE CLOSURE FOR PICK UP

CONTRACT #2393Y

N (SEE US FOR