

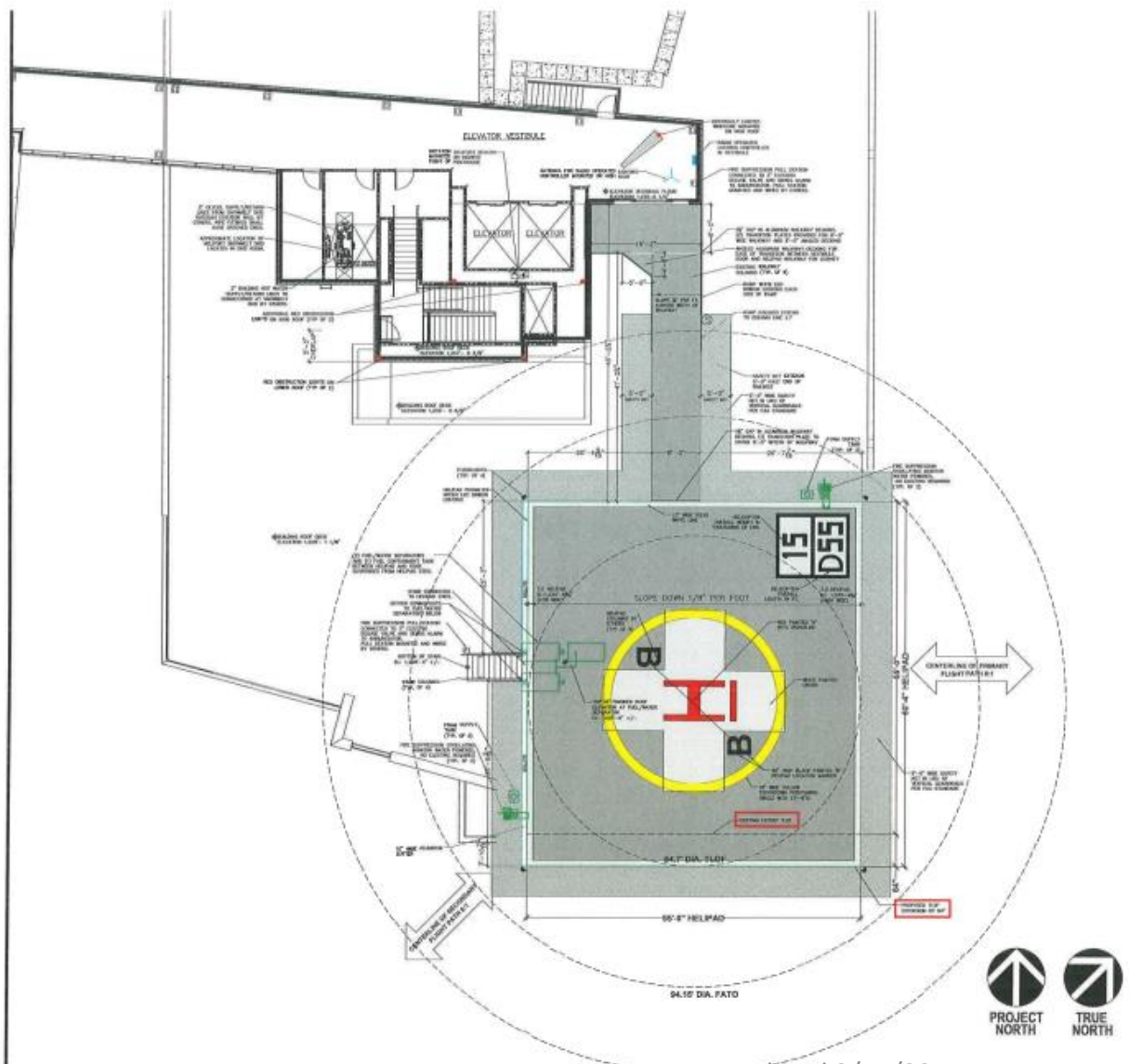


MSPAC

New Ruby Children's Helipad

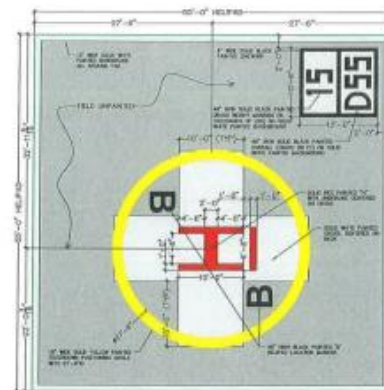






Updated 9/14/22 JMF

SCALE: 1/8" = 1'-0"



HELIPORT PAINT PLAN SCALE: 1/8" = 1'-0"

GENERAL NOTES:

- FEDERAL AVIATION ADMINISTRATION HELIPORT DESIGN GUIDE, AC 150/5360-20. CLASSIFICATION: VFR DAY & NIGHT, CATEGORY B, HORIZONTAL. TOLERANCES FOR DIMENSIONS UNLESS SPECIFIED OTHERWISE ARE: DIMENSIONS ARE IN INCHES UNLESS OTHERWISE NOTED. APPROXIMATE HELIPORT DATA: DESIGN SPEED/VELOCITY = 84.3 FT/SEC (25.7 M/S); APPROXIMATE HELICOPTER DATA: MAIN ROTOR DIAMETER = 42.0 FT; PEG APPROXIMATE HELICOPTER DATA: MAIN TAKEOFF WT = 15,000 LBS (6,800 KG); APPROXIMATE HELICOPTER DATA ROUNDED UP TO 15,000 LBS.
 - FAA HELIPORT DESIGNATION 5/A D AREA 1/3 RD 54.7' x 33.0' = 41,000' x 1/2 = 20.5' 41.0' x 33.0' = 13,530' x 1/2 = 6.75' 36.45' ADDED TO 24.7' TYP = 61.15' PAD
 - SWEET AREA IS PAD SURROUNDED BY 1/2 HELI-RD 42.0' x 1/2 = 14.7' 14.7' x 2 = 29.4' ADDED TO 34.7' PAD = 64.1' SWATH AREA
 - MEET A18 STANDARD FOR HELIPORTS, 2011 EDITION. CLASSIFICATION: ELEVATOR, CATEGORY B-2.
 - INTERNATIONAL BUILDING CODE 2015 WITH LOCAL MODIFICATIONS.
- GENERAL NOTES:**
- NOTE INDICATED AS BEING BY OTHERS SHOULD BE COMPLETED BY THE CONTRACTOR, CONTRACTOR, OR THEIR DESIGNATED SUBCONTRACTORS.
 - VERIFY DIMENSIONS OF ALL MECHANICAL, ELECTRICAL, PLUMBING, ALUMINUM HELIPORT AND RAMP SYSTEMS, SAFETY NETS AND RELATED HELIPORT EQUIPMENT ARE BY HELIPORT SYSTEMS.
 - ALL EQUIPPED ROOF/HALL PENETRATIONS AND BUILDING SHALL BE BY OTHERS.
 - FOR HELIPORT STRUCTURAL DETAILS, SEE STRUCTURAL DRAWINGS.
 - FOR HELIPORT ELECTRICAL DETAILS, SEE ELECTRICAL DRAWINGS.
 - FOR HELIPORT AIR FLOW SUPPRESSION SYSTEM DETAILS, SEE FIRE PROTECTION DRAWINGS.
 - FOR HELIPORT FUEL/WATER SEPARATOR Piping DETAILS, SEE MECHANICAL DRAWING.
 - FOR HELIPORT SIGNALING SYSTEM DETAILS, SEE MECHANICAL DRAWINGS.

HELIPORT SYSTEMS INC.
 15000 SOUTH
 15000 SOUTH
 15000 SOUTH
 15000 SOUTH

NEW ROOFTOP HOSPITAL HELIPORT
 WEST VIRGINIA UNIVERSITY MEDICAL
 1 MEDICAL CENTER DRIVE, MORGANTOWN, WV 26506

REVISIONS:

13 FEB 2019	RS	OCT 2020
02 APR 2018	JK	OCT 2020
04 JUN 2008	RS	NOV 2020
02 JUN 2008	JK	NOV 2020
11 JAN 2021	JK	JAN 2021
01 OCT 2020	JK	AUG 2021
01 OCT 2020	JK	APR 2021

DRAWN: JR
 SHEET NO.
G-1



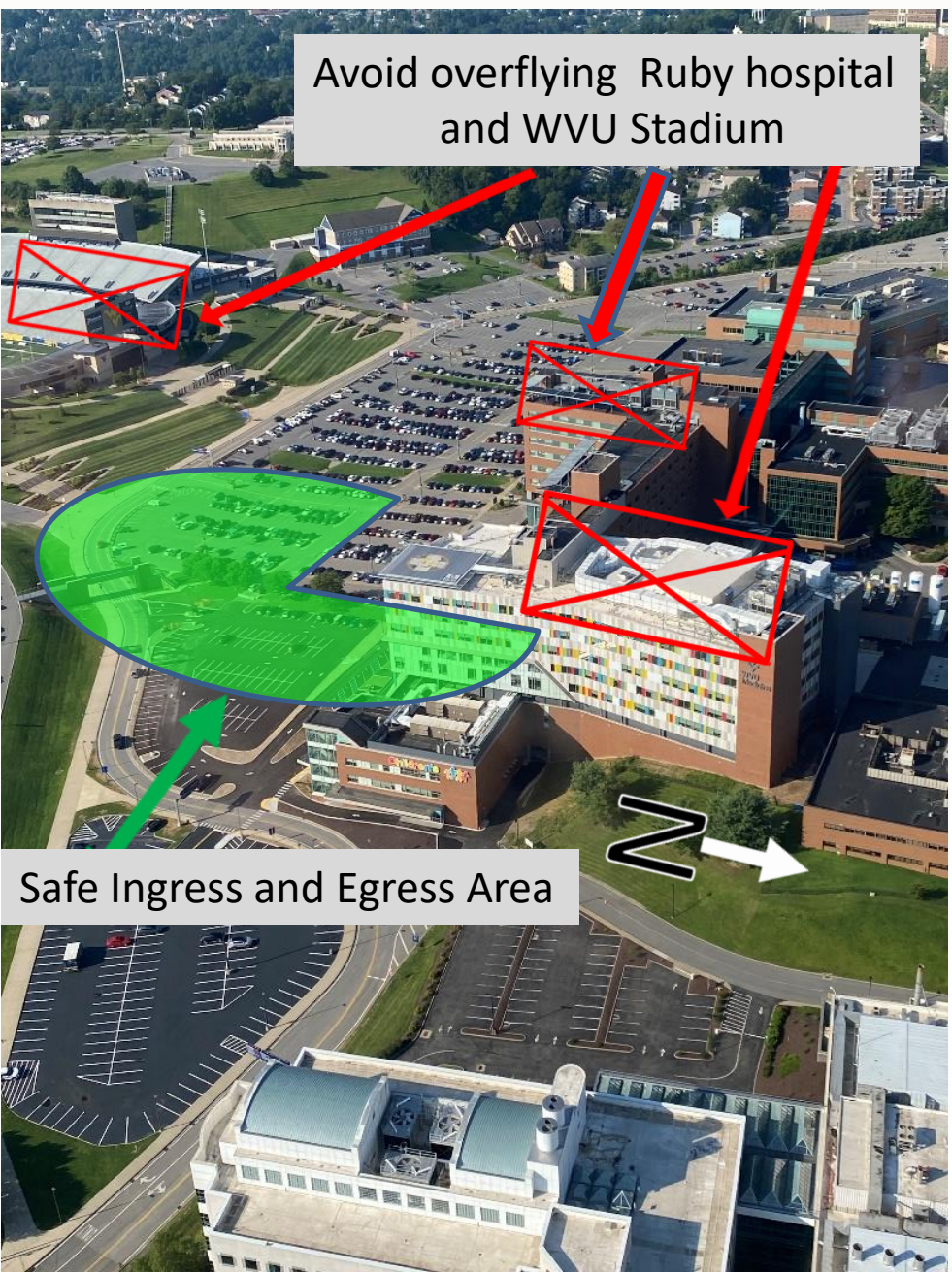
WVU Ruby Memorial New Children's Helipad

- FAA ID: WV51
- N39°39.24' W079°57.33'
- Inside KMGW Class D (2NM NW)
- Plan IFR Arrivals to KMGW. ILS18.
- Tower: 125.1 (0700-2300 L)
- AWOS: 120.675
- Clarksburg App. 121.15
- MEDCOM Comm 4 CH79 or Portable
- Helo Air to Air: 123.025
- **Description:**
- Elevated Helipad (app120' AGL)
- Rated for 15000 lbs, 55' Rotor diameter.
- Avoid overflight of hospital structures and WVU football stadium.
- Coordinate arrival and departure with other helicopters on 123.025 and MGW Tower on 125.1





Avoid overflying Ruby hospital and WVU Stadium



Safe Ingress and Egress Area

Updated 9/14/22 JMF





Updated 9/14/22 JMF



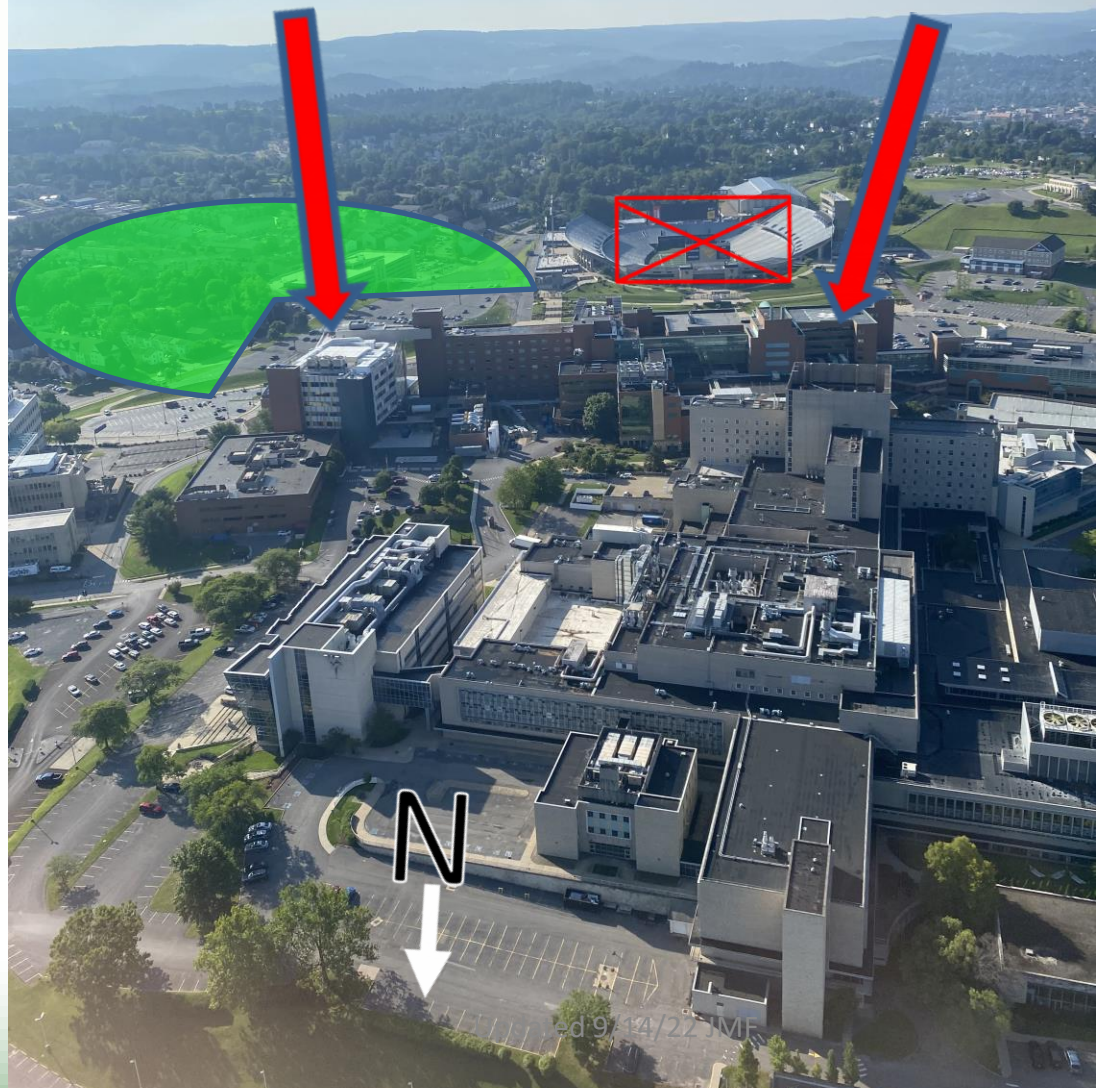
Updated 9/14/22 JMF



Looking South

New Children's Helipad

Existing Helipad



Ed 9/14/22 JMF



Looking East

KMGW





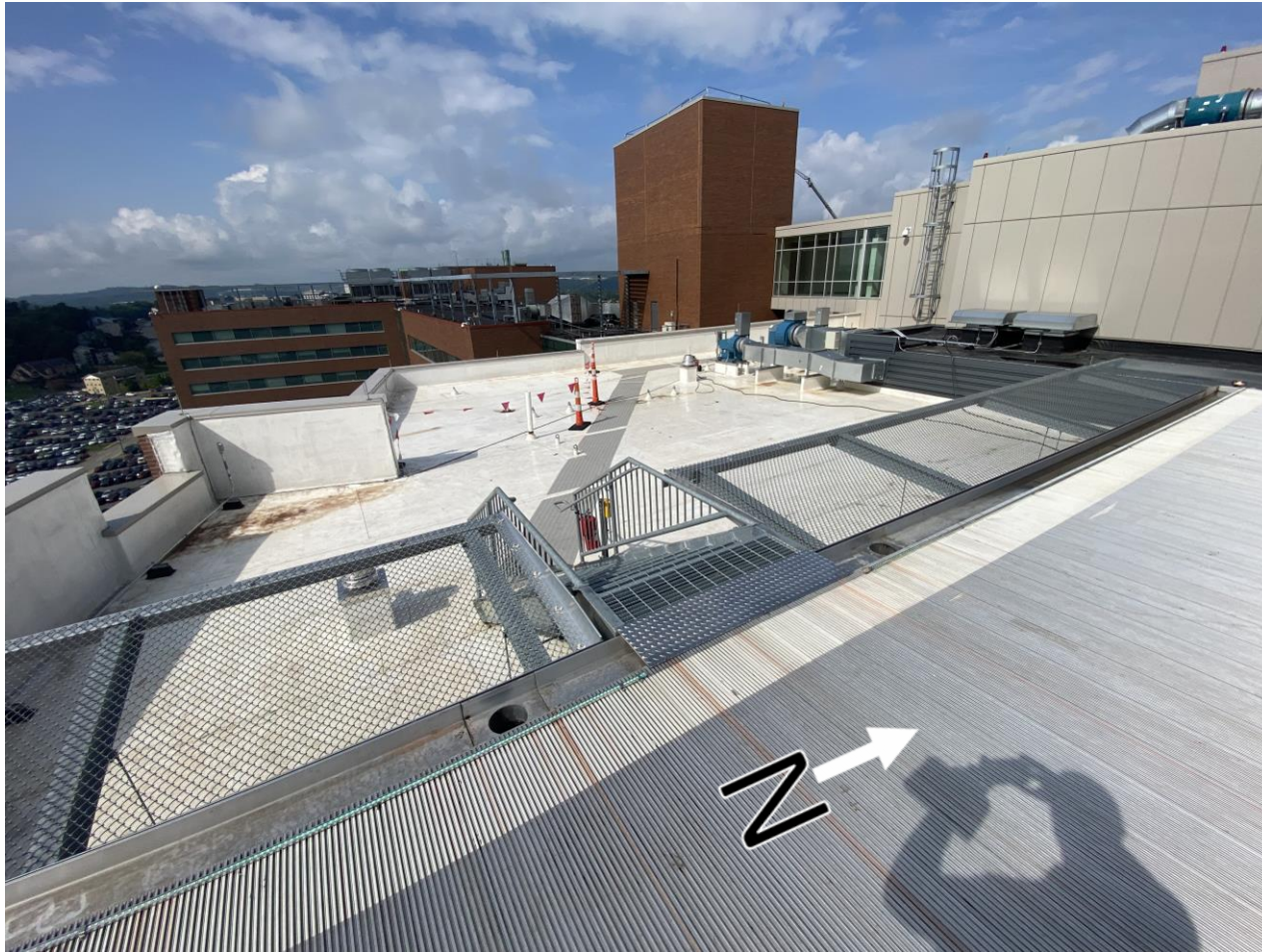
Looking SW toward Stadium



Updated 3/31/19 JMF



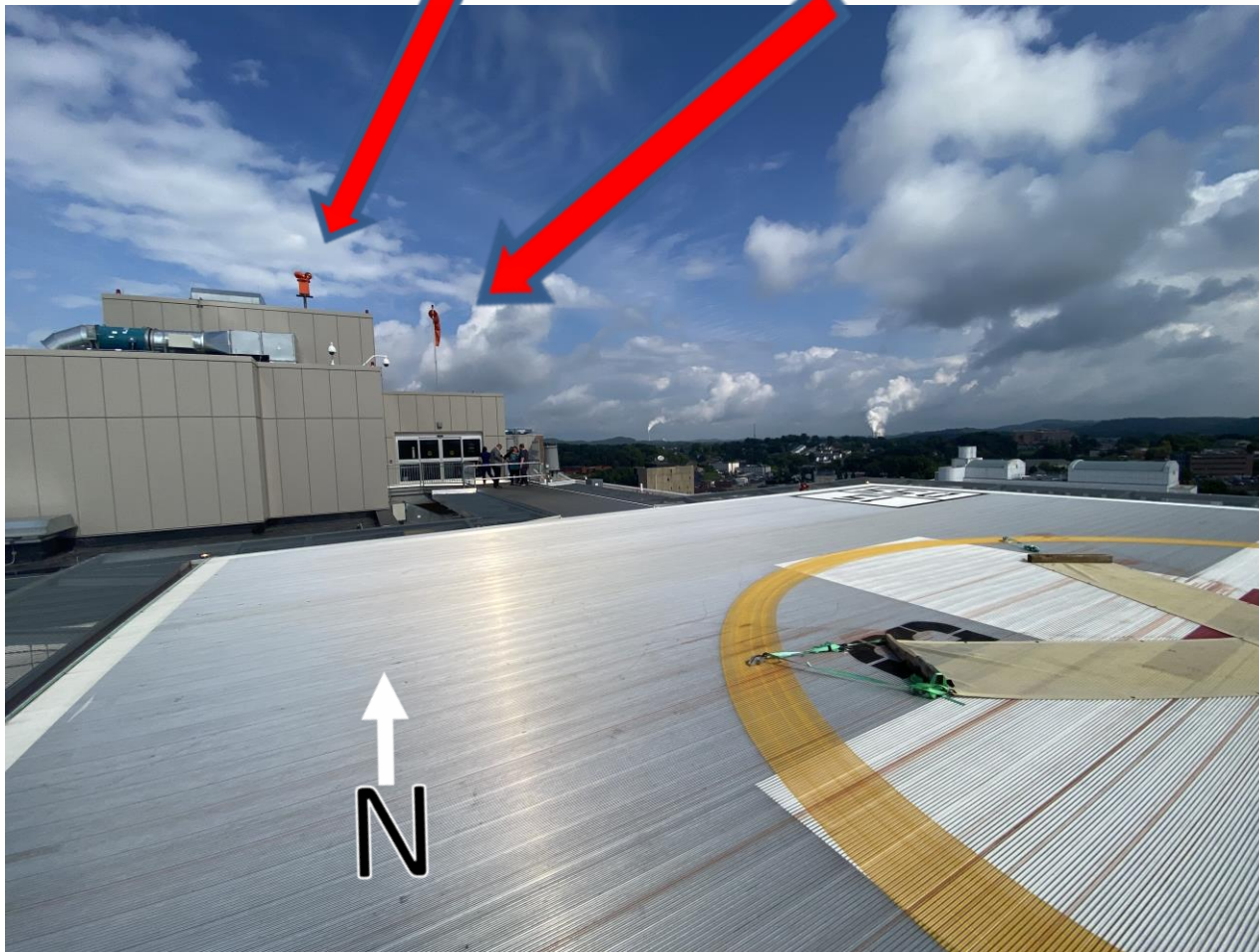
Access steps on west side of pad





View of Bunker

(heliport beacon and windsock)





Bunker





LED Pad Lighting

(Green edge lights on helipad and white on ramp to bunker)





5' wide safety net

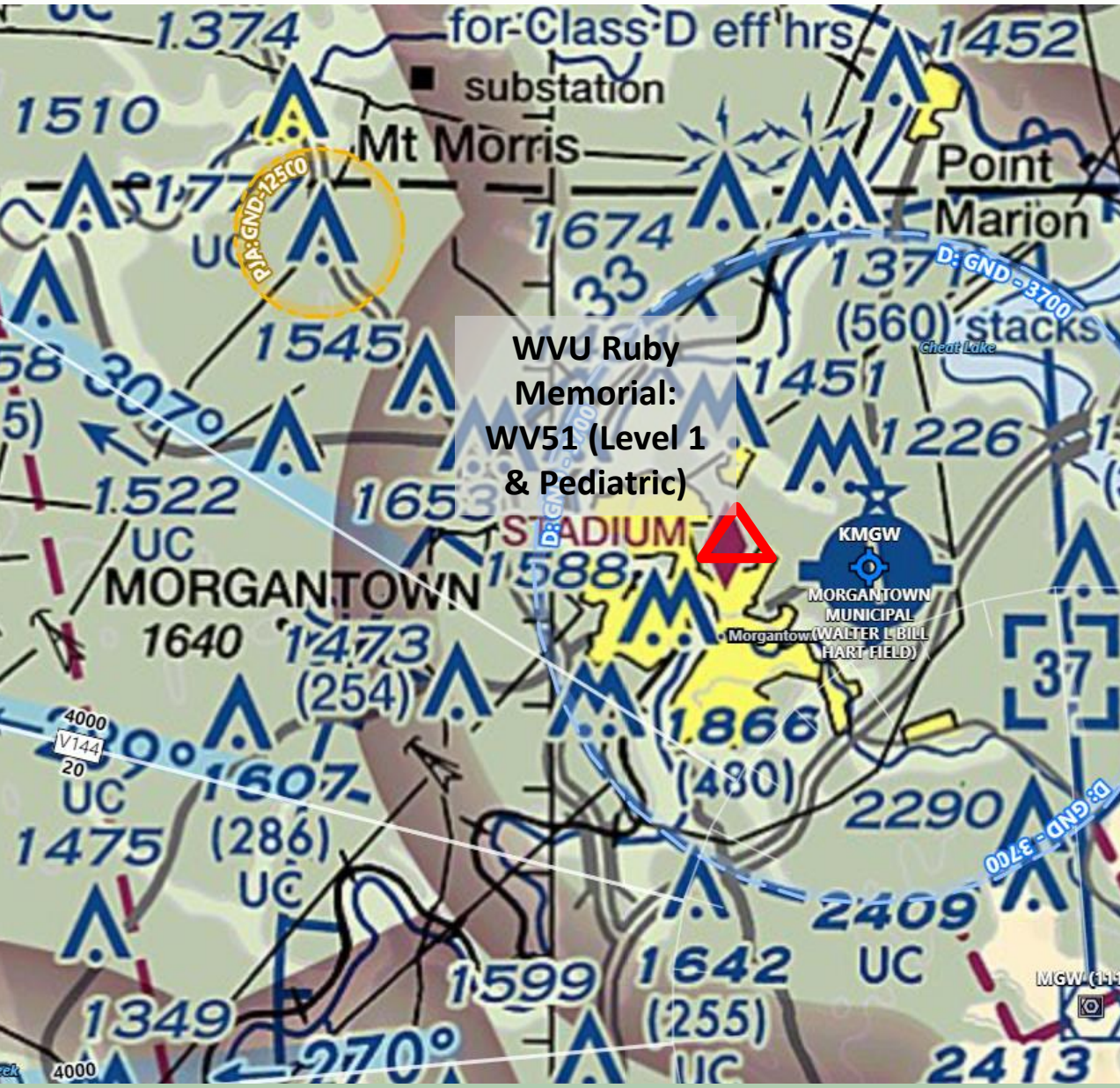


Don't overfly the stadium!





Morgantown



WVU Ruby Memorial:
WV51 (Level 1 & Pediatric)

Comms:

Clarksburg Approach: 119.35
MGW Tower: 125.1
MGW ATIS: 120.675
Helo Common: 123.025

Remarks:

- Class D surrounds KMGW.
- Deconflict with other Ruby traffic on 123.025.
- Fuel at KMGW (After hours, have MEDCOM call for KMGW for fuel.)